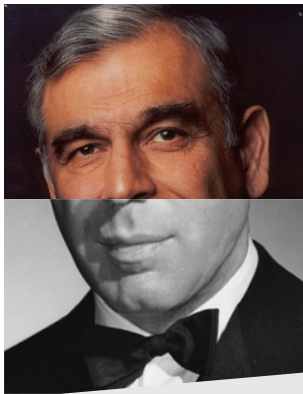




famous births and deaths.

Identify these halves of famous people, all of whom either were born or died on Christmas Day



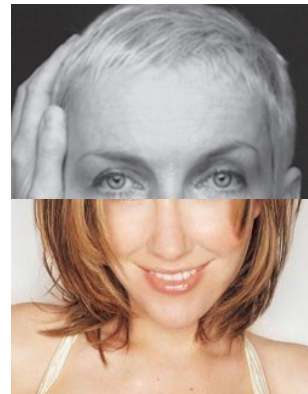
Top:

Bottom:



Top:

Bottom:



Top:

Bottom:



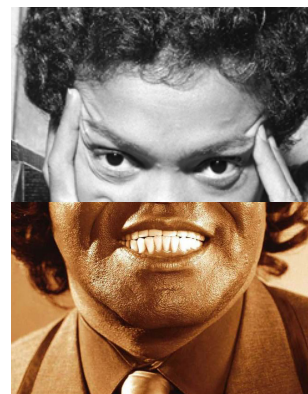
Top:

Bottom:



Top:

Bottom:



Top:

Bottom:



general christmas knowledge.

1. What date is St Stephen's Day?

.....

2. In Charles Dickens' novel A Christmas Carol, who was Scrooge's dead business partner?

.....

3. In the song The Twelve Days of Christmas, '...my true love brought to me nine...' what?

.....

4. Name the original eight reindeer from the 'Twas the night Before Christmas' poem?

.....

5. The character Jack Skellington appears in which 1993 Tim Burton film?

.....

6. What colour are the berries of the mistletoe plant?

.....

7. In the inspirational 1946 film, It's a Wonderful Life, what's the name of George Bailey's guardian angel?

.....

8. What are the names of the three wise men said to have brought gifts to the baby Jesus?

.....

9. Who wrote 'How the Grinch Stole Christmas'?

.....

10. What is the name of the cake traditionally eaten in Italy at Christmas?

.....



christmas (mis)hits.

All these songs just missed out on the UK Christmas Number One, they were runners-up in the number two position.

For each song please give: the year, the artist and say whether or not the song DID hit the No1 slot (*either before or after Christmas*)

| | ARTIST | YEAR | No1? |
|---------------------------------|--------|------|----------|
| (Just Like) Starting Over | | | Yes / No |
| Caravan of Love | | | Yes / No |
| Ice ice baby | | | Yes / No |
| All I want for Christmas is you | | | Yes / No |
| Wonderwall | | | Yes / No |
| Teletubbies say "Eh oh!" | | | Yes / No |
| Sacred Trust | | | Yes / No |
| JCB song | | | Yes / No |
| Hallelujah | | | Yes / No |
| Cannonball | | | Yes / No |



wordsearch.

The Winter Olympics were first held in France in 1924 and we now know that the 2018 games have been awarded to South Korea.

List all the host CITIES from 1924 - 2018. To make it easy all the cities are hidden in the wordsearch below. They may be listed in any direction, up, down, diagonally and backwards.

C O R T I N A D A M P E Z Z O
E R H L P C R S O R O P P A S
E E C Z Y A R A V I G Y L O R
E V S T E L A L I I E O I O T
L U I I O G N T E L V V L S T
A O M R N A R L L X L E L L I
K C R O G R L A L I O J E O N
E N A M C Y V K I N E A H Y N
P A G T H W Q E V O L R A S S
L V E S A O I C T M B A M O B
A Z Y U N T N I R A O S M C R
C Z Q A G A I T E H N Q E H U
I S G E A A R Y B C E G R I C
D A E E N L U A L V R O O T K
N E D A H A T I A R G V U T R



wordsearch answer sheet.

1.

2.

3.

4.

5.

6.

7.

8.

9.

10.

11.

12.

13.

14.

15.

16.

17.

18.

19.

20.